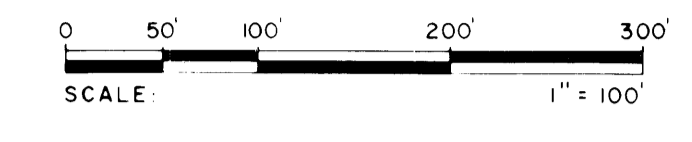


A
PLAT
OF

STUART WEST PHASE I

BEING PORTIONS OF SECTIONS 12 AND 13
TOWNSHIP 38 SOUTH, RANGE 39 EAST
MARTIN COUNTY, FLORIDA
JUNE 1980

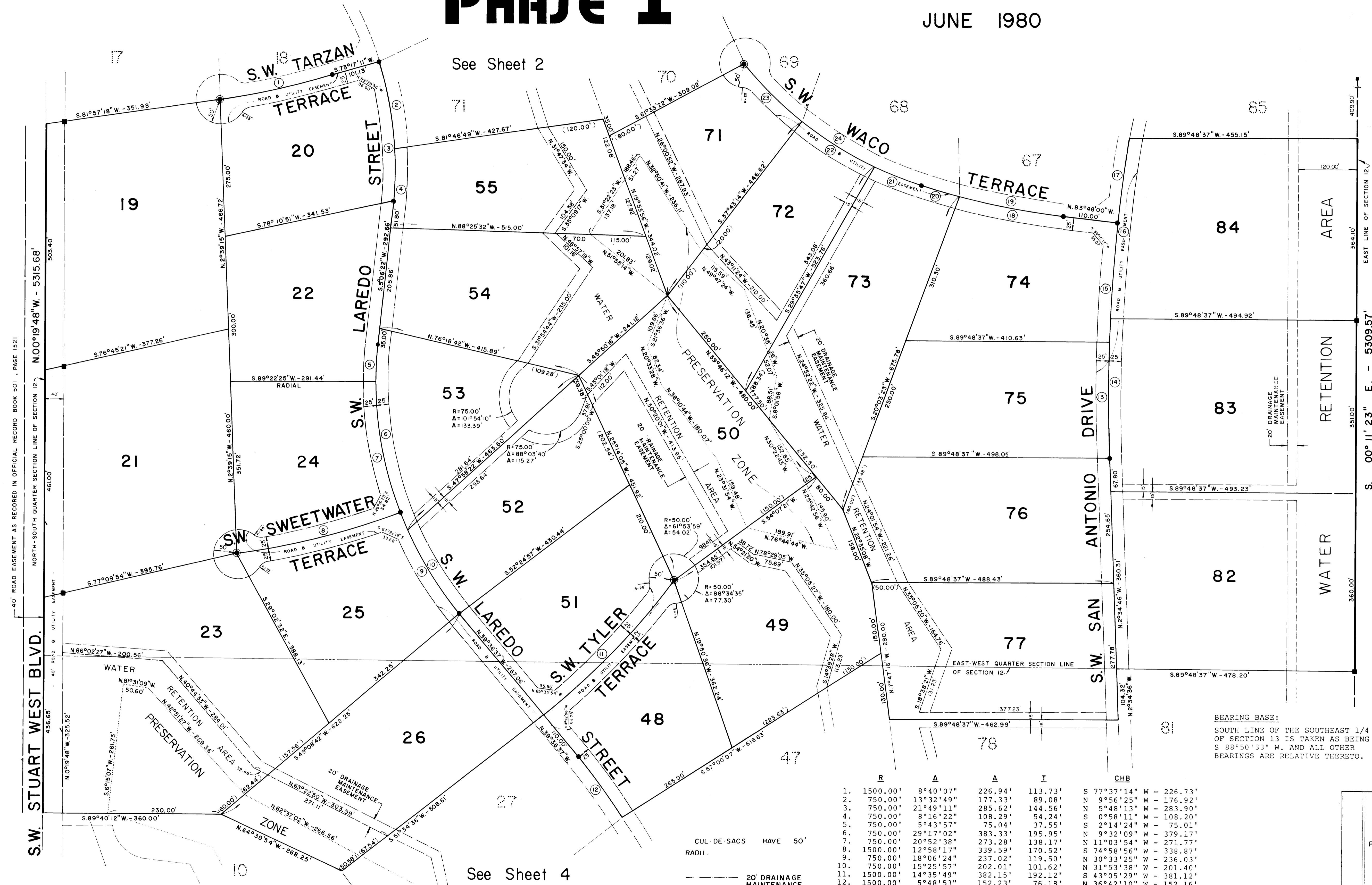


I, LOUISE V. ISAACS, COUNTY CLERK OF MARTIN COUNTY, FLORIDA, HEREBY CERTIFY THAT THIS PLAT HAS BEEN EXAMINED AND THAT IT COMPLIES IN FORM WITH ALL THE REQUIREMENTS OF THE STATUTES OF FLORIDA PERTAINING TO MAPS AND PLATS, AND THAT THIS PLAT HAS BEEN FILED FOR RECORD IN PLAT BOOK 8, PAGE 37, PUBLIC RECORDS OF MARTIN COUNTY, FLORIDA, THIS DAY OF _____, A.D. 19____.

LOUISE V. ISAACS, CLERK MARTIN COUNTY, FLORIDA

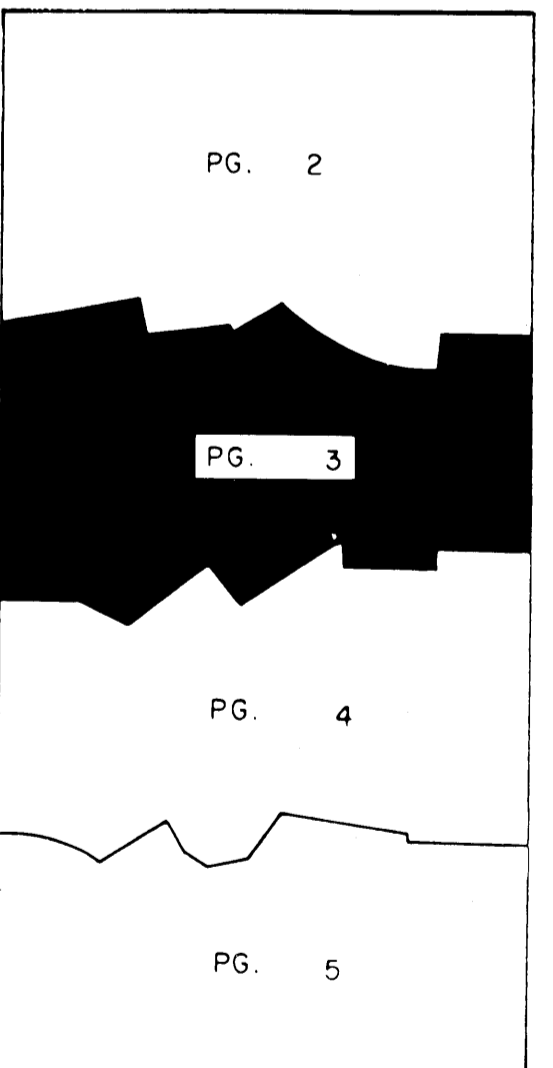
BY _____

FILE NO. _____



UNPLATTED

UNPLATTED



KEY MAP

SURVEYOR'S NOTES:

MONUMENTATION:

- - DENOTES PERMANENT REFERENCE MONUMENT (P.R.M.)
- - DENOTES PERMANENT CONTROL POINT (P.C.P.)
- ⊙ - DENOTES IRON ROD AT CENTER OF CUL-DE-SAC

	R	A	A	I	CHB
1.	1500.00'	8°40'07"	226.94'	113.73'	S 77°37'14" W - 226.73'
2.	750.00'	13°32'49"	177.33'	89.08'	N 9°56'25" W - 176.92'
3.	750.00'	21°49'11"	285.62'	144.56'	N 5°48'13" W - 283.90'
4.	750.00'	8°16'22"	108.29'	54.24'	S 0°58'11" W - 108.20'
5.	750.00'	5°43'57"	75.04'	37.55'	S 2°14'24" W - 75.01'
6.	750.00'	29°17'02"	383.33'	195.95'	N 9°32'09" W - 379.17'
7.	750.00'	20°52'38"	273.28'	138.17'	N 11°03'54" W - 271.77'
8.	1500.00'	12°58'17"	339.59'	170.52'	S 74°58'56" W - 338.87'
9.	750.00'	18°06'24"	237.02'	119.50'	N 30°33'25" W - 236.03'
10.	750.00'	15°25'57"	202.01'	101.62'	N 31°53'38" W - 201.40'
11.	1500.00'	14°35'49"	382.15'	192.12'	S 43°05'29" W - 381.12'
12.	1500.00'	5°48'53"	152.23'	76.18'	N 36°42'10" W - 152.16'
13.	3100.00'	4°20'10"	234.61'	117.36'	N 0°24'41" W - 234.56'
14.	3100.00'	5°14'14"	283.36'	141.78'	S 0°02'21" W - 283.26'
15.	3100.00'	4°26'36"	240.41'	120.26'	S 3°58'42" W - 240.35'
16.	3100.00'	6°46'24"	366.48'	183.45'	S 6°02'40" W - 366.27'
17.	3100.00'	3°13'52"	174.82'	87.44'	S 7°48'56" W - 174.80'
18.	1500.00'	8°13'10"	215.19'	107.78'	N 79°41'25" W - 215.00'
19.	1500.00'	11°16'55"	295.36'	148.16'	N 78°09'33" W - 294.88'
20.	1500.00'	3°03'45"	80.17'	40.10'	N 74°02'58" W - 80.16'
21.	750.00'	7°44'29"	101.34'	50.75'	N 68°38'51" W - 101.26'
22.	750.00'	13°05'23"	171.34'	86.05'	N 58°13'55" W - 170.97'
23.	750.00'	12°46'33"	167.23'	83.97'	N 45°17'57" W - 166.89'
24.	750.00'	33°36'24"	439.91'	226.49'	N 55°42'53" W - 433.63'

BEARING BASE:
SOUTH LINE OF THE SOUTHEAST 1/4 OF SECTION 13 IS TAKEN AS BEING S 88°50'33" W. AND ALL OTHER BEARINGS ARE RELATIVE THERETO.